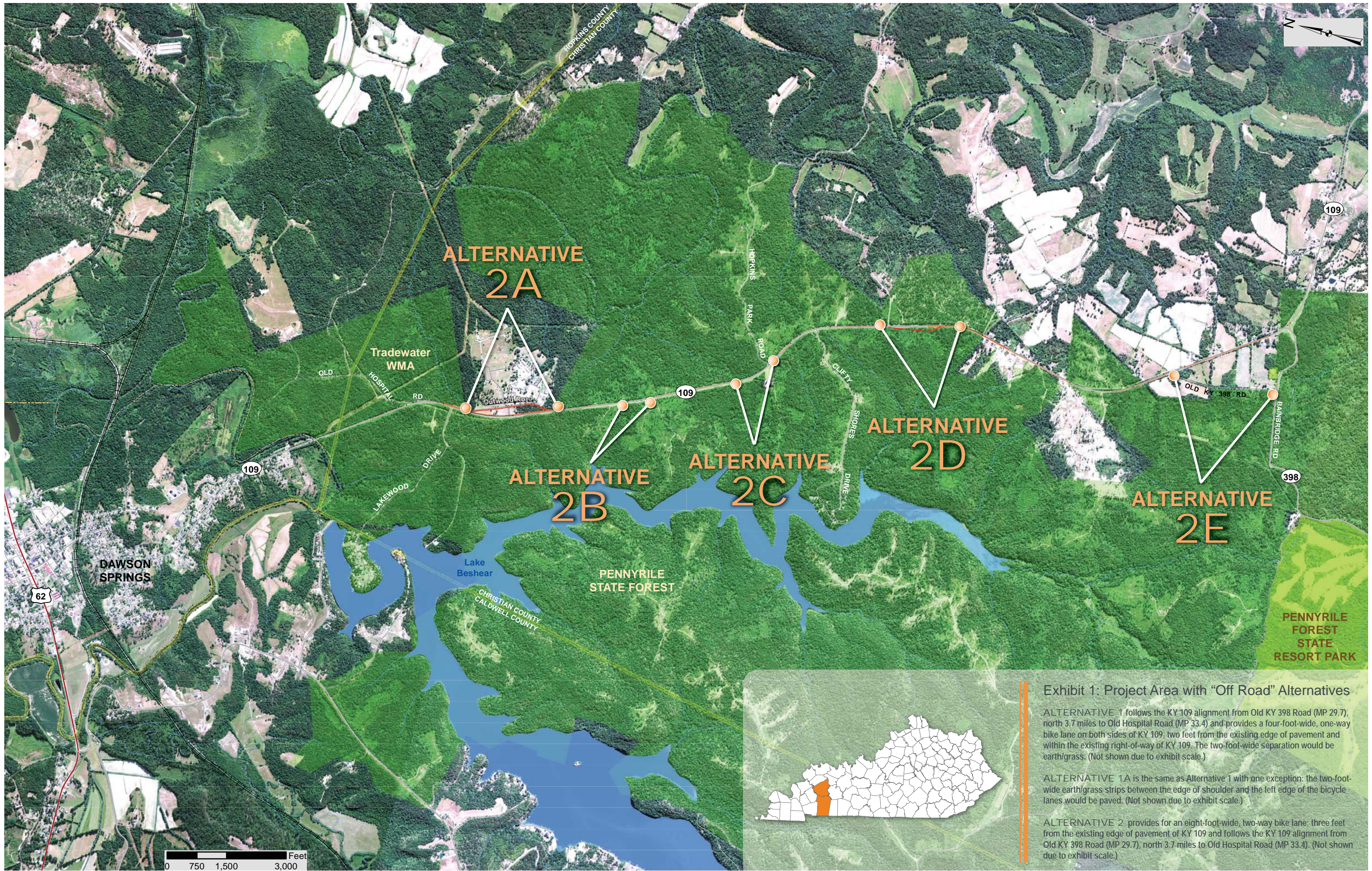


APPENDIX A

Exhibits



**ALTERNATIVE
2A**

**ALTERNATIVE
2B**

**ALTERNATIVE
2C**

**ALTERNATIVE
2D**

**ALTERNATIVE
2E**

Exhibit 1: Project Area with "Off Road" Alternatives

ALTERNATIVE 1 follows the KY 109 alignment from Old KY 398 Road (MP 29.7), north 3.7 miles to Old Hospital Road (MP 33.4) and provides a four-foot-wide, one-way bike lane on both sides of KY 109, two feet from the existing edge of pavement and within the existing right-of-way of KY 109. The two-foot-wide separation would be earth/grass. (Not shown due to exhibit scale.)

ALTERNATIVE 1A is the same as Alternative 1 with one exception: the two-foot-wide earth/grass strips between the edge of shoulder and the left edge of the bicycle lanes would be paved. (Not shown due to exhibit scale.)

ALTERNATIVE 2 provides for an eight-foot-wide, two-way bike lane; three feet from the existing edge of pavement of KY 109 and follows the KY 109 alignment from Old KY 398 Road (MP 29.7), north 3.7 miles to Old Hospital Road (MP 33.4). (Not shown due to exhibit scale.)

0 750 1,500 3,000 Feet

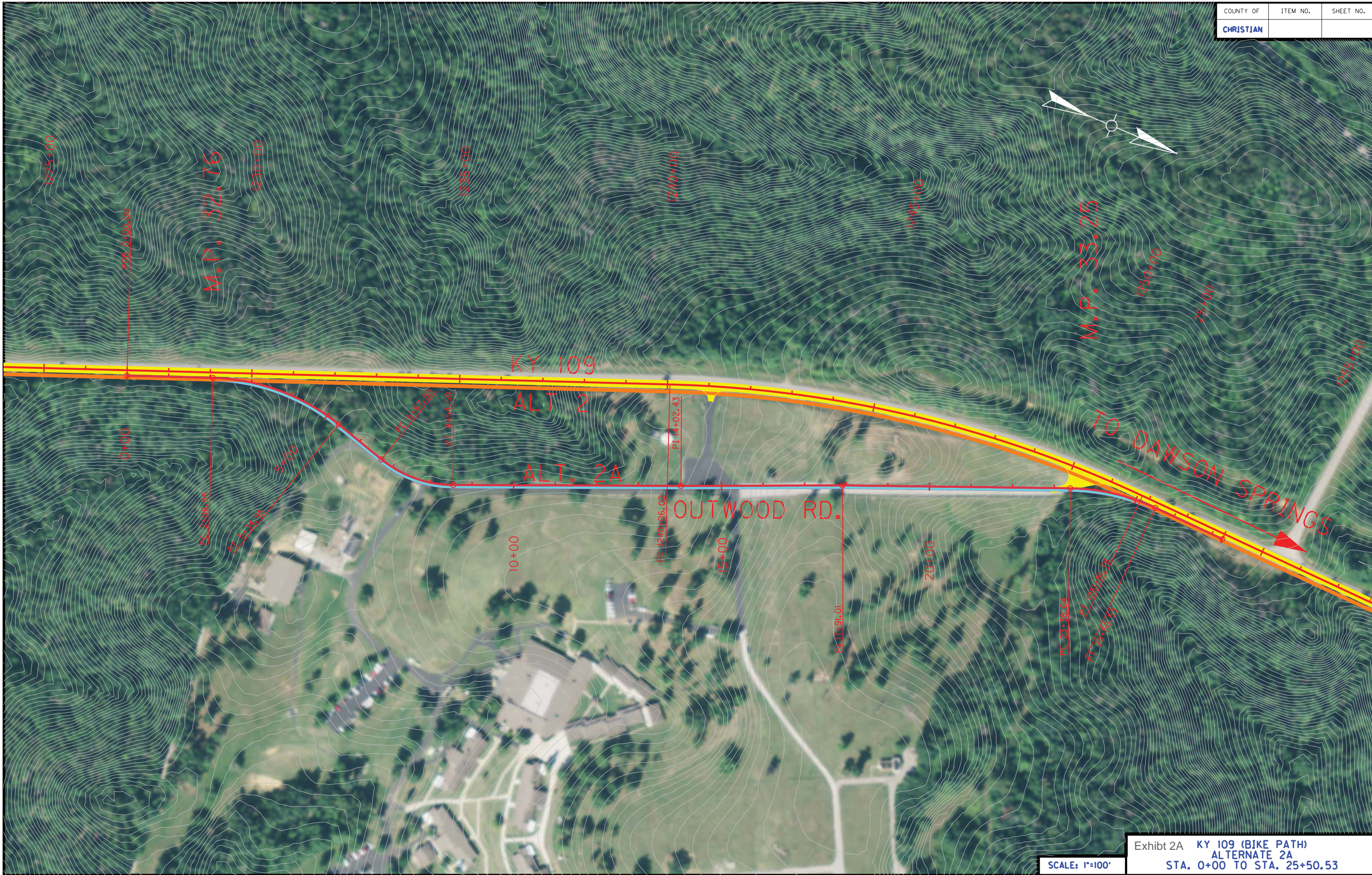
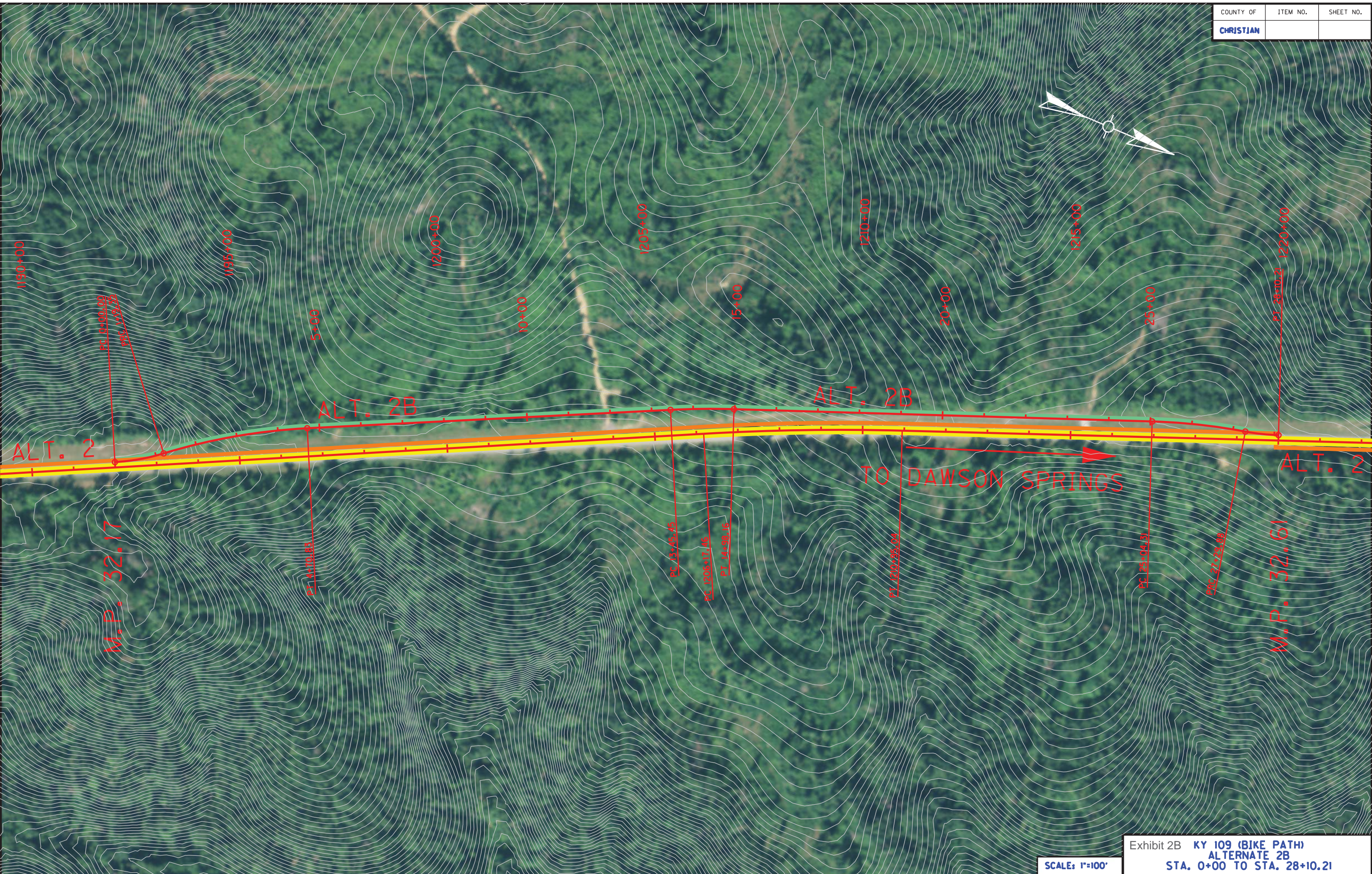


Exhibit 2A KY 109 (BIKE PATH)
 ALTERNATE 2A
 STA. 0+00 TO STA. 25+50.53

SCALE: 1"=100'





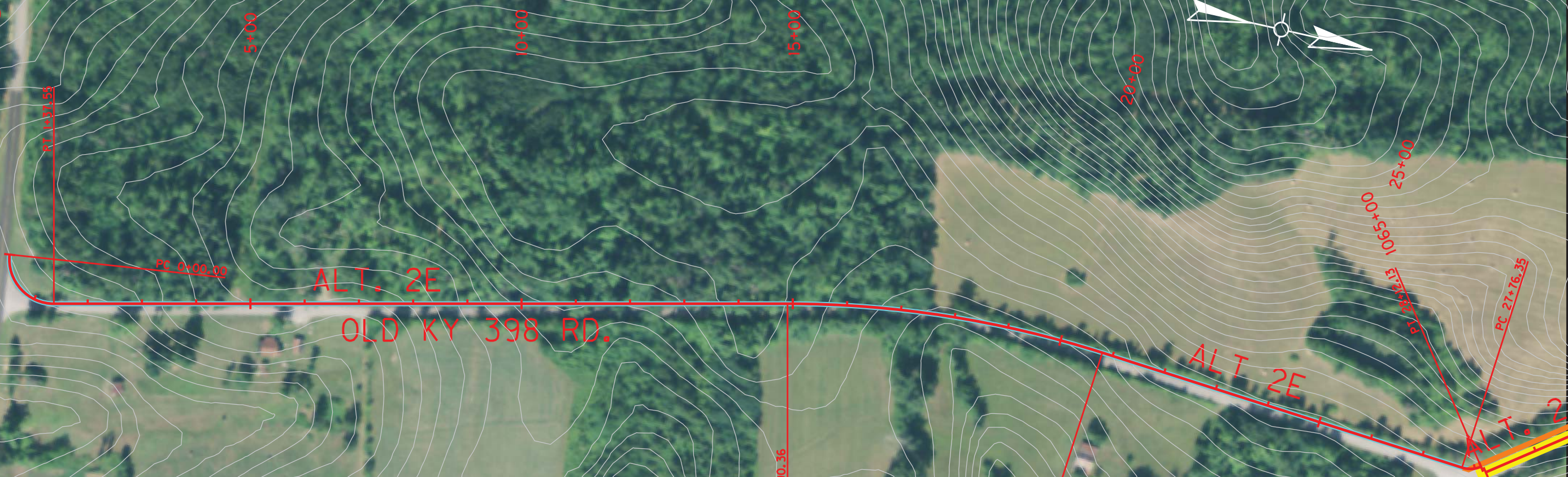
COUNTY OF	ITEM NO.	SHEET NO.
CHRISTIAN		



Exhibit 2D KY 109 (BIKE PATH)
ALTERNATE 2D
STA. 0+00 TO STA. 15+57.26

SCALE: 1"=50'

BAINBRIDGE RD. (KY 398)



ALT. 2E
 OLD KY 398 RD.

TO DAWSON SPRINGS

KY 109

SCALE: 1"=100'

Exhibit 2E KY 109 (BIKE PATH)
 ALTERNATE 2E
 STA. 0+00 TO STA. 28+12.13